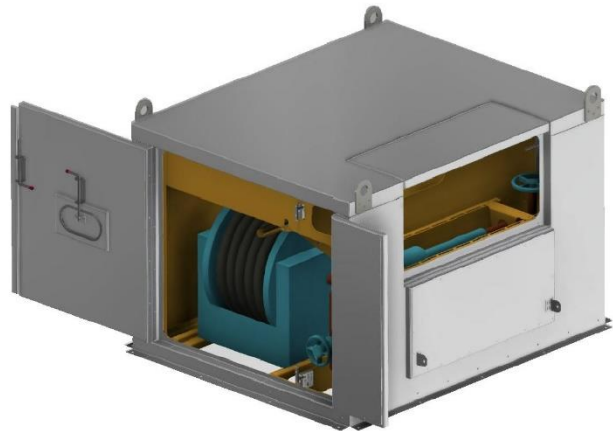




Building a sheet of flat, glassy ice to skate on is tough work, a labour of love. RinkWater™ has created a winter-proof kit with all the components necessary to conform to all plumbing codes and enable the true hockey heroes, the RinkRats, to make better ice faster and with less effort.

The RinkWater™ **Winter Water Widget** features:

- 25mm (1") thick, insulated 2-ply aluminum enclosure
- Keyless locking system with 600lb magnetic door strikes
- Internal LED lighting
- Water meter and backflow preventer
- Motorized retractable hose reel with porthole, 38mm lay flat firehose and nozzle
- Thermostatically-controlled 1,500 watt heater (lab tested to -50 C/-58 F)
- 120vac, single-phase, 60-amp electrical panel and disconnect
- Duplex receptacle and data port
- Graffiti-resistant vinyl wrap
- CSA-certification



Custom options include:

- Booster pumps
- Integrated irrigation controls and manifolds
- 220vac electrical setup for sports lighting controls
- CCTV streaming RinkCam™
- Uninterruptible Power Supply (UPS) or Auto-Dialer to alert RinkRat of power outage
- Custom vinyl artwork



Manufactured and sold under Canadian and U.S. patents pending

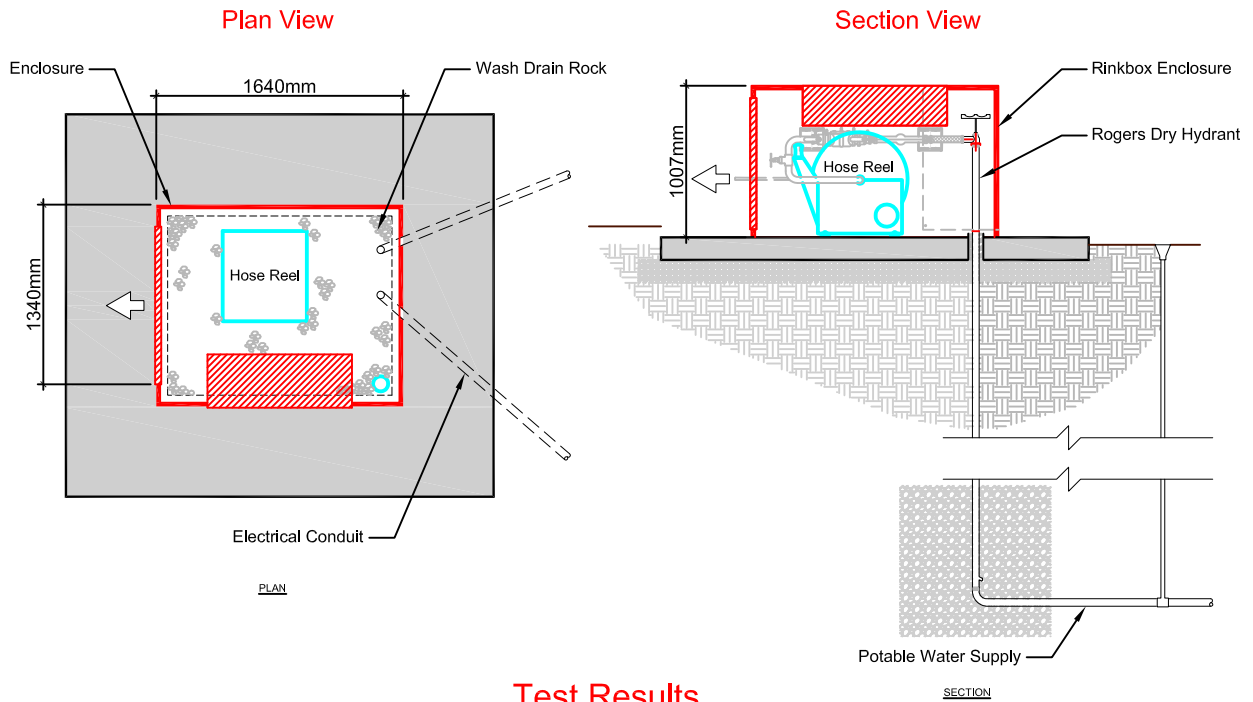


HASSLE-FREE RINK BUILDING PRODUCTS

www.rinkwater.com
2432 – 91 Avenue S.E.
Calgary, Alberta T2C 5H2
403-301-4105

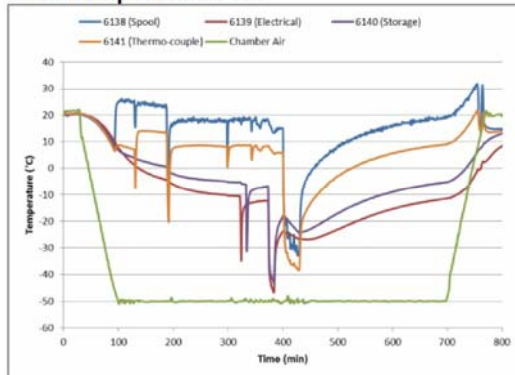


Installation Details

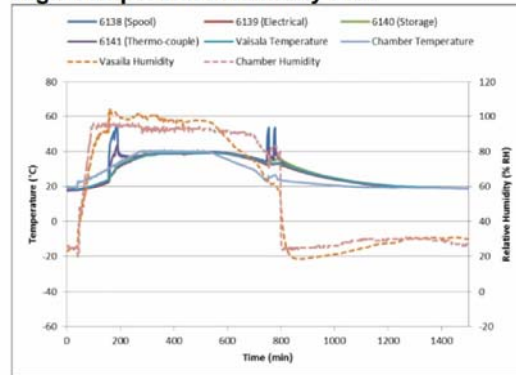


Test Results

Cold Temperature Plot



High Temperature/Humidity Plot



Test Conclusion

The test results are summarized in the following table:

Test Case	Test Type	Specification	Level	Test Sample	Result
1	Cold Temperature	IEC 60068-2-1:2008 § 5.3	-50 °C	RinkWater	PASS
2	High Temperature/Humidity	IEC 60068-2-30:2005 §7	40 °C & 95 % RH	RinkWater	PASS