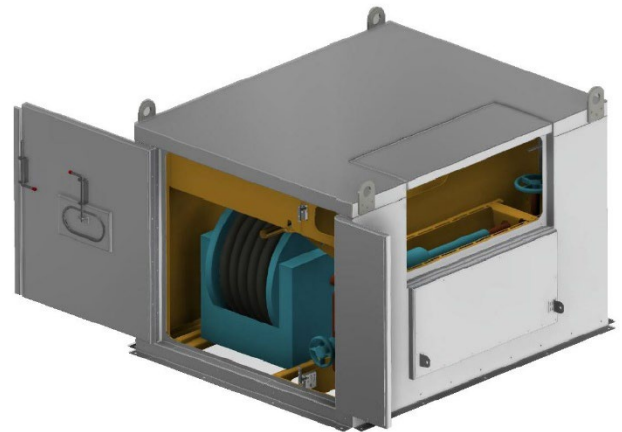




Building a sheet of flat, glassy ice to skate on is tough work, a labour of love. RinkWater® has created a winter-proof kit with all the components necessary to conform to all plumbing codes and enable the true hockey heroes, the RinkRats, to make better ice faster and with less effort.

The RinkWater® Kit features:

- 25mm (1") thick, insulated 2-ply aluminum enclosure
- Internal LED lighting
- Backflow preventer
- Motorized retractable hose reel with porthole, 60m x 38mm lay flat firehose and nozzle
- All internal plumbing parts excluding water meter
- Thermostatically-controlled 1,500 watt heater
- 120/240vac, single-phase, 60-amp electrical panel and disconnect
- Duplex receptacle and electrical components.
- Graffiti-resistant standard vinyl wrap
- Dry hydrant for connection to the water source.



Custom options include:

- Booster pumps
- Integrated irrigation controls and manifolds
- Custom vinyl artwork



Manufactured and sold under Canadian and U.S patents



www.rinkwater.com

#535. 7620 Elbow Drive SW Calgary, AB T2V 1K2
403-301-4105